

Sample information

Sample Name : B51 B60
 Sample ID : H12042119
 Analysis date : 13/04/2021
 Matrix : Plant material
 Sampling : Ext

Customer data

PF Trading B.V.
 weg Keienbergweg 49
 00000 EX Amsterdam - Netherlands
 NL-852326932B01

Cannabinoid profile

Detector A

Name	Dry weight %
CBDV	0,00
CBDA	14,31
CBGA	0,20
CBG	0,00
CBD	0,29
THCV	0,00
CBN	0,00
d9-THC	0,02
d8-THC	0,00
CBC	0,07
THCA	0,49

Total THC	0,45	%
Total THC	4,47	mg/g
Total CBD	12,84	%
Total CBD	128,41	mg/g

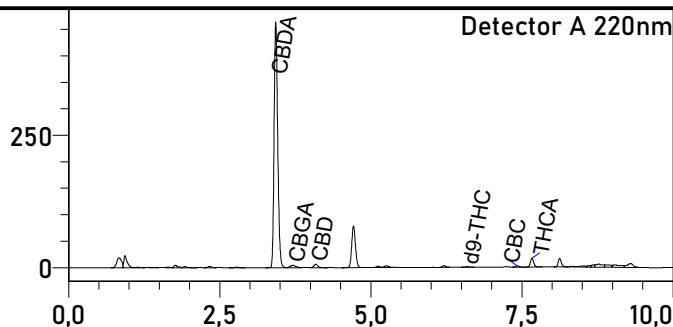
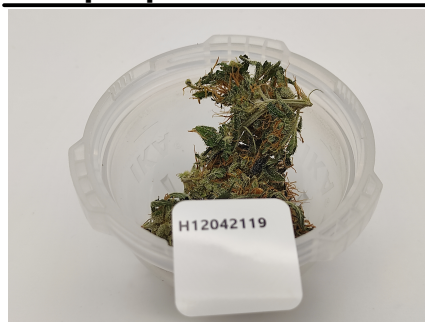
% -% (w / w) = (Analyte weight / Product weight)

* Total THC / CBD is calculated using formulas following in order to calculate the group loss carboxylic during decarboxylation
 Total THC = THC + (THCA * 0.877)
 Total CBD = CBD + (CBDA * 0.877)

LOD (Limit of Detection) **: 0.002%
 LOQ (Limit of Quantification) **: 0.005%
 ** For all cannabinoids

Moisture at the time of analysis - 10.50%

Sample photo



The analysis for the quantitative determination of the main cannabinoids was released on 13/04/2021

13/04/2021

Responsabile di laboratorio - Dr Edoardo Alfinito

The results of the analysis are based on the sample sent to Ambra Srl under the conditions received. Ambra Srl guarantees that all analytical work is carried out professionally in accordance with the standards laboratory tests using methods validated by the scientific community. This Certificate cannot be reproduced, if not complete, without the approval of Ambra srl

